



SANSKRITHI SCHOOL OF ENGINEERING

Behind SSSS Hospital, Beedupalli knowledge park, Prasanthigram, Puttaparthi - 515134
Affiliated by JNTUA & Approved by All India Council for Technical Education (AICTE), www.sseptp.org

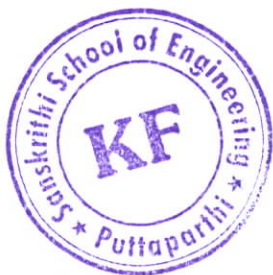
Water Supply and Quality Management at SSE Campus

Sanskriti School of Engineering (SSE) ensures a reliable and safe water supply for its students, faculty, and campus facilities. The campus is equipped with four bore wells strategically located to cater to the drinking water needs, utility requirements, and plantation initiatives. The bore wells serve as a vital source of water, accommodating the water demand of a diverse campus population, including over 300 students residing in the hostels. This provision ensures that an adequate supply of water is available to meet the daily requirements of the college community.

SSE recognizes the importance of water quality and adheres to accreditation requirements by conducting regular water quality testing. These tests are carried out to ensure that the water supplied from the bore wells meets the prescribed standards for safe consumption and usage. The institution prioritizes the health and well-being of its students and faculty by maintaining the highest water quality standards.

Through efficient water supply management and rigorous quality testing, SSE strives to provide a sustainable and safe water environment within the campus. This commitment to reliable water supply and quality management creates a conducive learning and living environment for all members of the college community.

S.No	Location of the bore well	Depth of the bore well	Yield
1	In the Play Ground	900 Ft	2"
2	Near Main Gate	900 Ft	2.5"
3	Near Cattle Shed	880 Ft	2.5"
4	Near SSB	1000Ft	2"




Principal

Sanskriti School of Engineering
Beedupalli Road, Prasanthigram,
PUTTAPARTHI - 515 134.
Anantapuramu (Dt) A.P.



Fig: Borewell point near boys hostel



[Handwritten Signature]
Principal
 Sanskrithi School of Engineering
 Beedupalli Road, Prasanthingram,
 PUTTAPARTHI - 515 134.
 Anantapuramu (Dt) A.P.



Fig: Borewell point near SSE entrance gate



A. Jeyanthi
Principal
 Sanskrithi School of Engineering
 Beedupalli Road, Prasanthingram,
 PUTTAPARTHI - 515 134.
 Anantapuramu (Dt) A.P.



Fig: Bore well point near SSE Grounds



PRINCIPAL
C. A. Venkatesh
Principal
Sanskriti School of Engineering
Beedupalli Road, Prasanthingram,
PUTTAPARTHI - 515 134.
Anantapuramu (Dt) A.P.

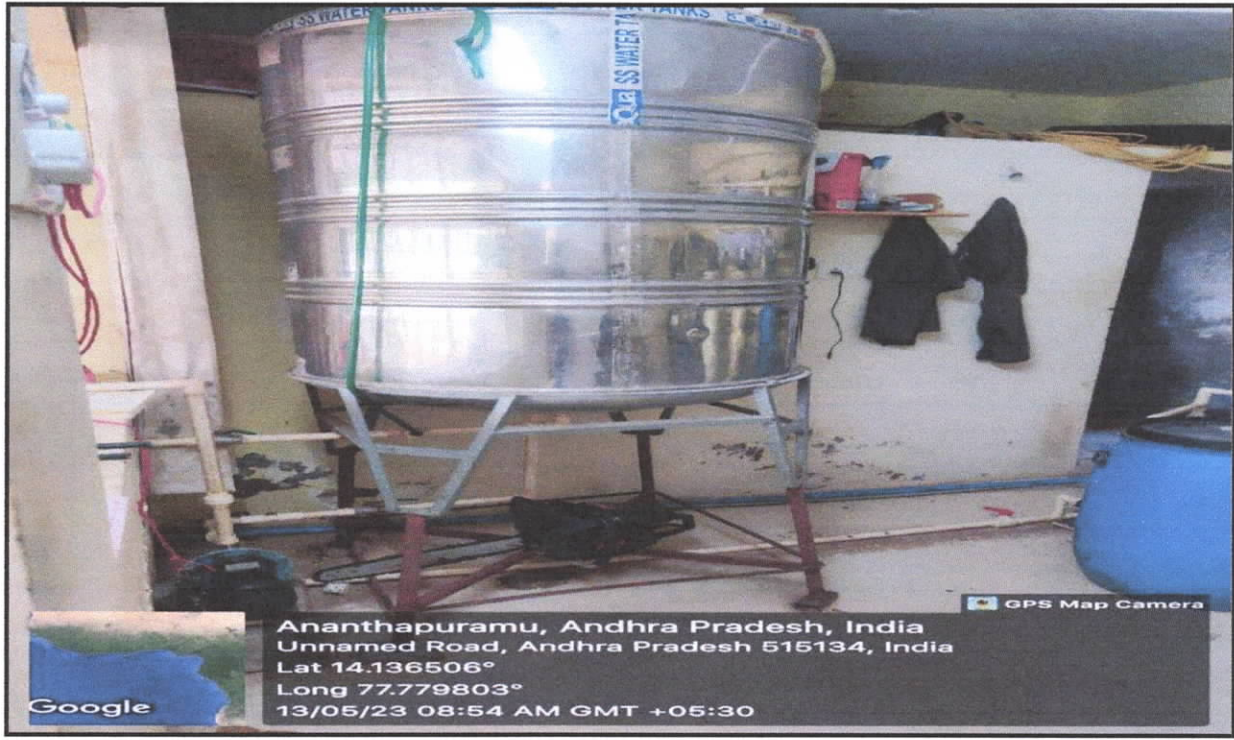


Fig: purified Water tanks for drinking



[Handwritten Signature]
PRINCIPAL

Principal
Sanskriti School of Engineering
Beedupalli Road, Prasanthingram,
PUTTAPARTHI - 515 134.
Anantapuramu (Dt) A.P.

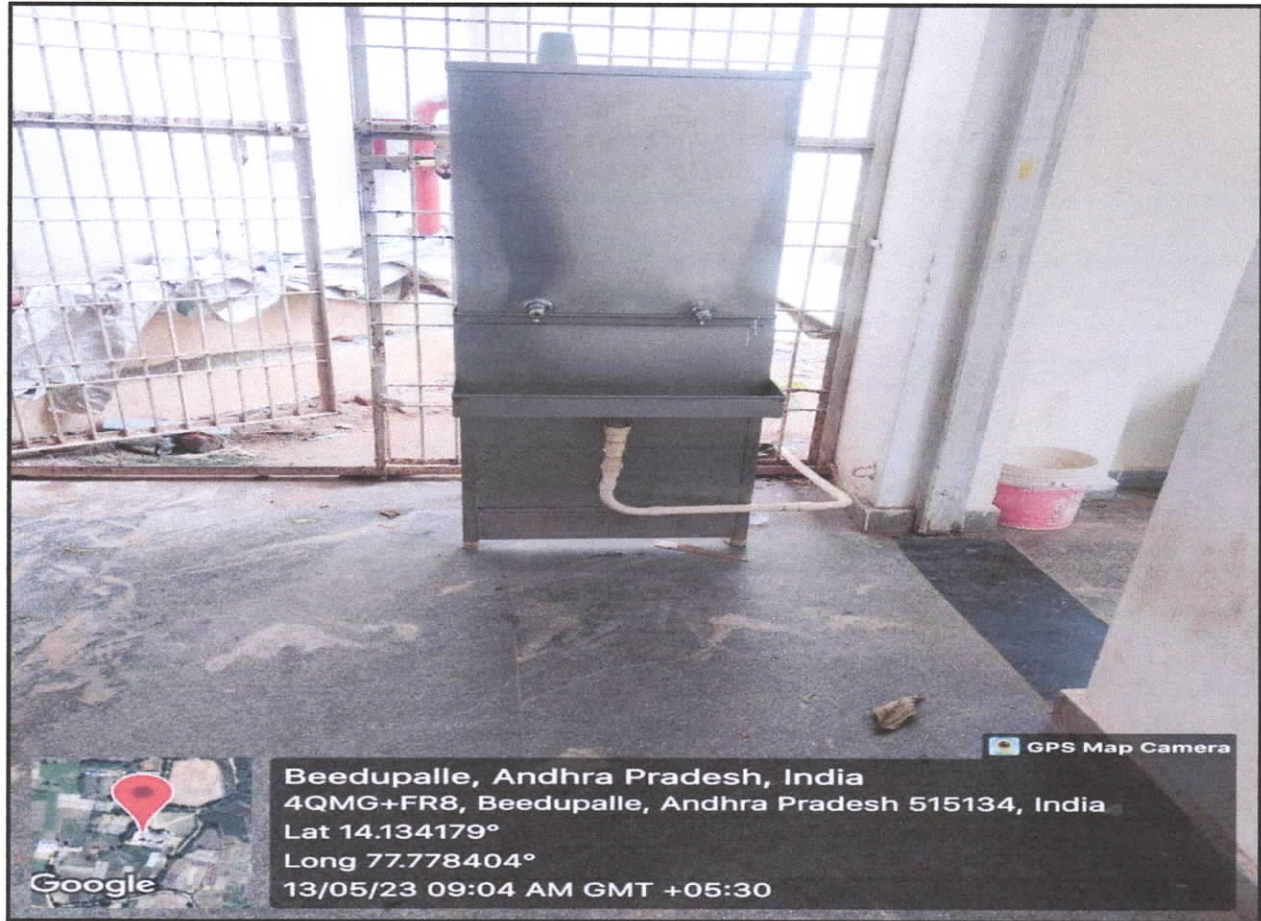


Fig: Drinking water facility in SSE



Adventari
PRINCIPAL

Principal
Sanskriti School of Engineering
Beedupalli Road, Prasanthingram,
PUTTAPARTHI - 515 134.
Anantapuramu (Dt) A.P.



Pumps you can rely on

MARUTHI ENTERPRISES
#01,, BESIDE JMFC COURT, DVG ROAD, BAGEPALI
CHICKABALLAPUR DIST, KARNATAKA-561207
Mobile-9844406508 GSTIN: 29CLFPS4225M12



Borewell

Tax Invoice

Invoice No:0040/2018	Transport Mode:OWN
Invoice date:21-06-2018	Vehicle number:
Reverse Charge (Y/N): N	Date of Supply:
State:ANDHRA PRADESH	Place of Supply:

Buyer	
Name: SAI SANSKRITHI EDUCATIONAL SOCIETY	
Address:PUTTAPARTHY	
GSTIN:	
State:	Code

S. No.	Product Description	HSN Code	Qty	Rate	Amount	Taxable value	IGST		Total
							Rate	Amount	
1	"TEXMO" 5.0 H.P 2900 RPM FS022+SRF15/40	8413	1	30000	30000	30000	12	3600	33600
2	FINOLEX CABLE 4.00 SQ MM		210	89	18690	18690	18	3364.2	22054.2
3	HDPE PIPE		200	90	18000	18000	18	3240	21240
4	L&T PANEL BOARD		1	4500	4500	4500	18	810	5310
Total			412		71190	71190		11014	82204.2

Total Invoice amount in words	Total Amount before Tax	71190
EIGHTY TWO THOUSAND TWO HUNDRED AND FOUR RUPEES	Add: IGST	11014.2
	Total Amount after Tax:	82204.2
	GST on Reverse Charge	0

Bank Details	Certified that the particulars given above are true and correct For maruthi enterprises # 01, Beside JMFC Court, D.V.G Road, Bagepalli, Chikkaballapur Dist - 561 207.
Bank A/C: 358302000000020	
Bank IFSC: IOBA003583	
Terms & conditions	Common Seal
1) Goods once sold will not be taken back or exchanged	Authorized signatory
2) Goods are sent at buyers risk	



PRINCIPAL
A. Venkatesh
Principal
Sanskriti School of Engineering
Beedupalli Road, Prasanthingram,
PUTTAPARTHI - 515 134.
Anantapuramu (Dt) A.P.

SANSKRITHI SCHOOL OF ENGINEERING

Driven by Creativity & Innovation
(Affiliated to JNTUA & Recognised by AICTE, New Delhi)
International Association With RISE **RISE**



Dr. A. Senthil Kumar
B.E., M.E., M.B.A., PGDVLISI., Ph.D., (IITR)
PDF(TUT,SA), SeniorPDF(VSB-TUO,EUROPE),
PGPAI&ML(University of Texas,Austin),
Principal

Date: 10-06-2023.

To,
The Deputy Executive Engineer,
RWS, Bukkapatnam,
Sri Sathya Sai District.

Respected Sir/Madam,

Sub: Request to issue Water Testing Certificate reg;

Sanskriti School of Engineering located at Beedupalli Road, Prashanthigram, Puttaparthi-515134, Sri Sathya Sai District, established in the year 2015 and offering B.Tech CSE, ECE, EEE, CIVIL and MECH.

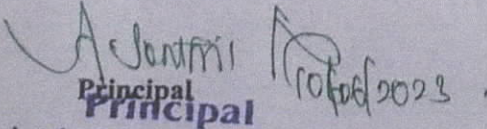
As we are applying for National Assessment and Accreditation Council (NAAC) we need "Raw Water Testing Certificate".

Here with I am sending the water samples and request you to issue the Raw Water Testing Certificate.

Hope you do the needful.

Thanking You Sir,

With Regards


Principal
Sanskriti School of Engineering
Beedupalli Road, Prasanthingram,
PUTTAPARTHI - 515 134.
Anantapuramu (Dt) A.P.

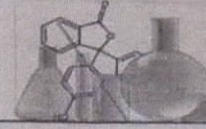



PRINCIPAL

Principal
Sanskriti School of Engineering
Beedupalli Road, Prasanthingram,
PUTTAPARTHI - 515 134.
Anantapuramu (Dt) A.P.

WATER QUALITY MONITORING & SURVEILLANCE LABORATORY

RURAL WATER SUPPLY & SANITATION,
BUKKAPATNAM-SUB-DIVISION



WATER ANALYSIS REPORT (నీటి విశ్లేషణ నివేదిక)

Type of Source	BORE						
Location / Habitation	SANSKRITHI SCHOOL OF ENGINEERING, PRASHANTHIGRAM						
Mandal	PUTTAPARTHI						
Date Collected	13.06.2023						
Date Received	13.06.2023						
Date Reported	15.06.2023						
Sl. No	Parameter	LIMITS as per IS 10500		Unit	Source Result	Remarks	
		Desirable	Permissible				
సంఖ్య	కొలమానము	కావలసిన స్థాయి	అమోద స్థాయి	మాపనము	ఫలితము	సూచన	
1	pH	ఉదజని సూచి	6.5 - 8.5	No relaxation	-	7.89	
2	TDS	ముత్రము కలిగి ఉన్న పున పదార్థములు	500	1500	mg / litre	840	
3	Turbidity	మురికి	5	10	NTU	2	
Chemical Parameter (రసాయనిక కొల మానములు) mg / L							
1	Alkalinity	కారత్వము	200	600	mg / litre	540	
2	Total Hardness	కారీన్యత	300	600	mg / litre	408	
3	Chloride as Cl	క్లోరైడ్	250	1000	mg / litre	198	
4	Sulphate as SO ₄	సల్ఫేట్	200	400	mg / litre	98	
5	Nitrate as NO ₃	నైట్రిట్	45	100	mg / litre	7.7	
6	Iron	ఇనుము	0.3	1	mg / litre	0.01	
7	Fluoride	ఫ్లోరైడ్	1	1.5	ppm	1.98	
Microbiological Parameters (సూక్ష్మ జీవ కొల మానములు) number / 100 ml							
1	Coliforms	కొలిఫార్మ్ బాక్టీరియా					NAGATIVE
2	Escherichia coli	ఎశ్చిరియా కొలి బాక్టీరియా					NAGATIVE
Result		ఫలితము					

K. Suresh
Asst. CHEMIST
IWQM LABORATORY
RWS & S SUB - DIVISION
BUKKAPATNAM.

S. Govindarani
MICROBIOLOGIST
IWQM LABORATORY
RWS & S SUB - DIVISION
BUKKAPATNAM.

T. Sita Devi
Assistant Executive Engineer
RWS & S, BUKKAPATNAM.

Water Quality Monitoring and testing report



(Signature)
Principal
Sanskriti School of Engineering
Beedupalli Road, Prasanthingram,
PUTTAPARTHI - 515 134.
Anantapuramu (Dt) A.P.