



SANSKRITHI SCHOOL OF ENGINEERING

Behind SSSS Hospital, Beedupalli knowledge park, Prasanthigram, Puttaparthi - 515134
Affiliated by JNTUA & Approved by All India Council for Technical Education (AICTE), www.sseptp.org

1. Safety and security

Ensuring the safety and security of female students is a primary concern for every college campus. Creating a safe and supportive environment poses both an obligation and a challenge for college administrators and students alike. To address this, the institution has taken proactive measures to provide a comprehensive range of security amenities specifically tailored for female students within the premises. A dedicated team of security personnel has been established to oversee the safety of all students. Recognizing that many outstation students are venturing out from their homes and cities for the first time, it is crucial for the institution to create a comfortable and secure atmosphere that makes them feel at home within the campus. The issue of women's safety on college campuses is now a pressing concern. According to a survey, 86% of parents consider campus safety as one of the most important factors in choosing an institution for their children. Addressing this problem requires a multi-faceted approach involving awareness and prevention programs, open dialogue, and concrete action. Consequently, regular lessons on sexual assault and its prevention are incorporated into the curriculum starting from the school level, enabling students to become more informed, vigilant, and empowered to take preventive measures and ensure their safety when faced with such unfortunate circumstances. To this end, the following actions have been implemented to ensure the safety of female students:



Adithyan K.
Principal
Sanskriti School of Engineering
Beedupalli Road, Prasanthigram,
PUTTAPARTHI - 515 134.
Anantapuramu (Dt) A.P.



Fig: Hostel Security Guard in SSE Campus

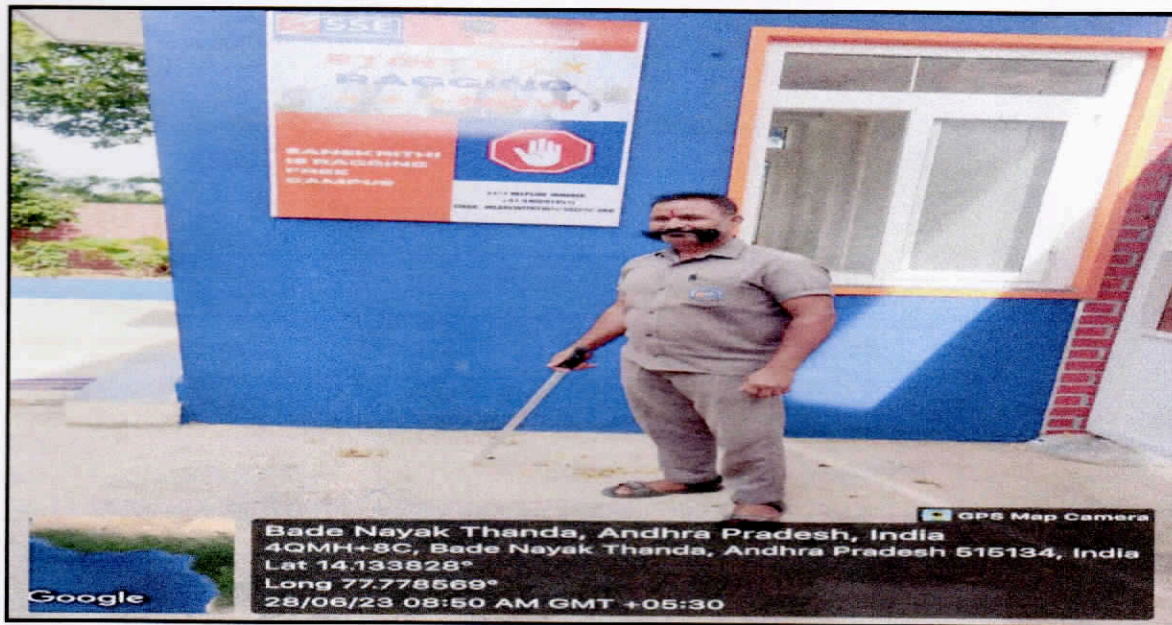


Fig: Security Guard in SSE Campus

1.1 Enhanced Security Measures and Student Support

The institution has implemented a robust security system, including 24-hour CCTV surveillance, to monitor and deter any antisocial activities within the college premises. This surveillance system plays a crucial role in maintaining a safe and secure environment. Students and staff are aware of this surveillance, fostering a sense of vigilance and promoting responsible behavior



[Handwritten Signature]
Principal
 Sanskrithi School of Engineering
 Boodupalli Road, Prasanthnigram,
 PUTTAPARTHI - 515 134.
 Anantapuramu (D) A.P.

among the college community. Additionally, the presence of CCTV cameras contributes to the overall discipline of the campus and instills a sense of security not only in the students but also in their guardians. As an additional security measure, all students are required to wear identification cards at all times, ensuring their proper identification within the college premises. This comprehensive approach reflects the institution's commitment to the well-being and care of its students in every aspect.

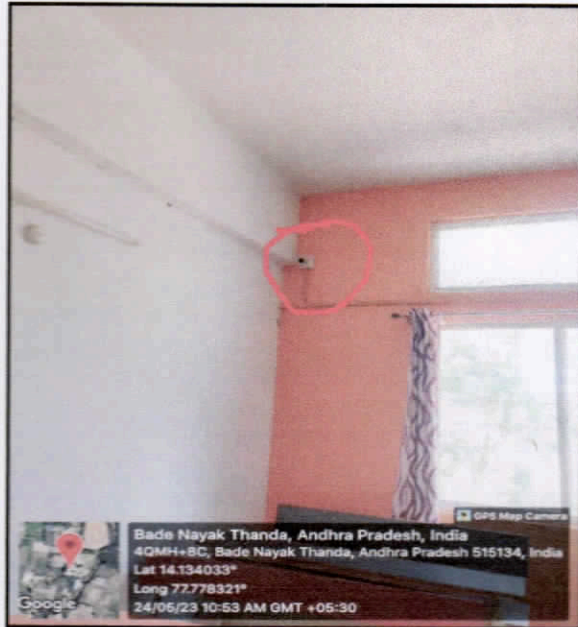


Fig: CC TV cameras inside class rooms and corridors



Fig: CC TV cameras at Staff Rooms and corridors



Calvin...
Principal
Sankrithi School of Engineering
Beedupalli Road, Prasanthnigam,
PUTTAPARTHI - 515 134.
Anantapuramu (Dt) A.P.



Fig: CC TV cameras at SSE Hostels



Fig: Girls Hostel Female Warden and Supervisor



Ed. Jennifer
Principal
 Sanskriti School of Engineering
 Beedugilli Road, Prasanthnigraam,
PUTTAPARTHI - 515 134.
 Anantapuramu (Dist) A.P.