

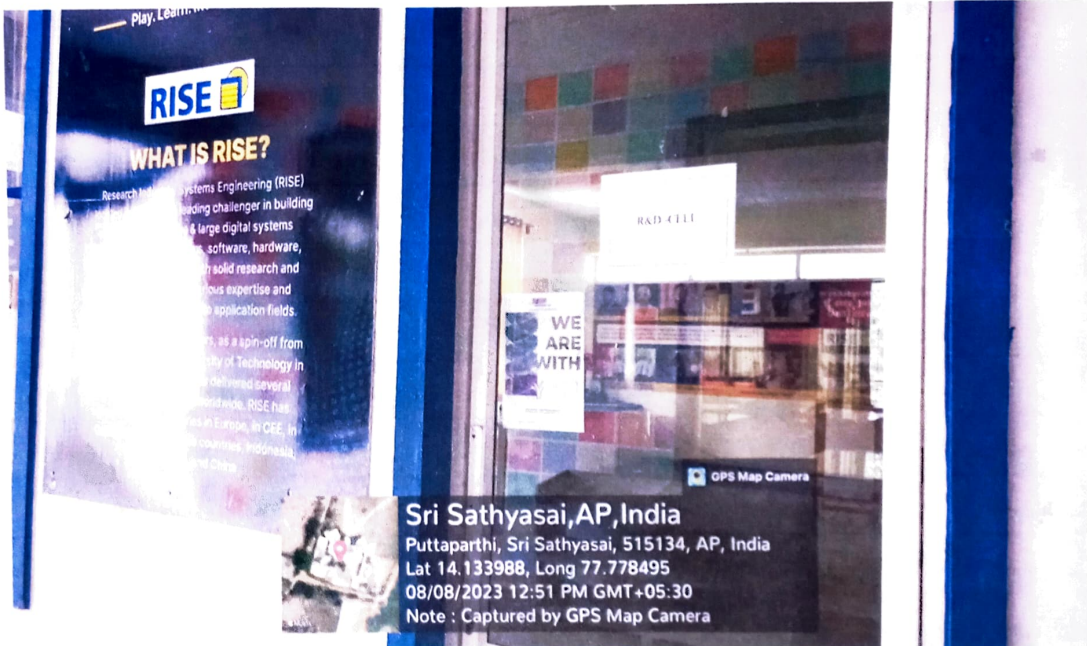


SANSKRITHI SCHOOL OF ENGINEERING

Behind SSSS Hospital, Beedupalli knowledge park, Prasanthigram, Puttaparthi - 515134
Affiliated by JNTUA & Approved by All India Council for Technical Education (AICTE), www.sseptp.org

RESEARCH AND DEVELOPMENT CELL

R&D-CELL




COORDINATOR


PRINCIPAL



Principal
Sanskriti School of Engineering
Beedupalli Road, Prasanthigram,
PUTTAPARTHI - 515 134,
Anantapuramu (Dt) A.P.

RESEARCH & DEVELOPMENT CELL

Research Innovate and Transform (RIT)

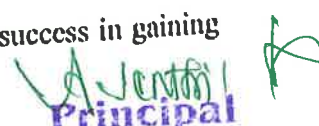
Research is the backbone of academics. It simplifies concept building and transforms new ideas into innovations in pursuance of a new era of passion for researches. Each finding gives immense pleasure and multiplies enthusiasm towards achieving target.

The Research and Development Cell aims to nurture research culture in the College by promoting research in newly emerging and challenging areas of Engineering, Technology, Science and Humanities. It encourages the students and faculty to undertake the research in newly emerging frontier areas of Engineering, Technology, Science and Humanities including multidisciplinary fields. This enhances the general research capability of budding technocrats by way of participating in conferences, seminars, workshops, project competition, etc.

The Research and Development Cell is functioning with the following objectives:

- To create awareness and opportunities in Research and Development among the students & faculty and to create Research and Development atmosphere in every department;
- To create interest and atmosphere among the staff members to take up Research projects and improve their knowledge, skills and qualifications by registering Ph. D's;
- To motivate the faculty members of the group for R&D activities in the area of their specialization;
- To encourage staff members and students to publish technical papers for publishing in National and reputed International Conferences/Journals;
- To encourage faculty members of all the disciplines in Engineering/Science /Humanities in R&D activities for their professional growth;
- To undertake research activities and development projects offered by agencies such as ISRO, DRDO, CSIR, DST, AICTE, UGC, DBT, INFOSYS, etc.
- To assist the students to apply funding for conducting research under student project scheme to various funding agencies like TNSCST, IEI (I), DRDO, TCS, Infosys etc.;
- To assist for applying and getting funds for conducting Seminar/Workshop/FDP from various available funding agencies;
- To facilitate the growth of research activity among the academic community, including developing mechanisms and targets to achieve this;
- To develop and coordinate strategies for maximizing the faculty's success in gaining external research funding;




Principal
Sanskriti School of Engineering
Beedupalli Road, Prasanthingram
PUTTAPARTHI - 515 134.
Anantapuramu (Dist) A.P.

- To work with various departments to establish and develop faculty research priorities on interdisciplinary areas;
- To interact with industry, government, professions and the wider community on all research matters promote faculty research activities to external stakeholders;
- To coordinate faculty level workshops and staff development activities on research-related issues;
- To maintain effective links with government departments, authorities, business, and commerce and industry organizations relevant to the college research activities.

In order to promote research and development activities, the college extends its full support to students/faculty/staff. Full/Partial financial support is given to all innovative research & development works taken up by the students, faculty and staff members. The college encourages students, faculty and staff to participate in National/International Conferences, Training programmes, Tech-Festivals organized by reputed institutes (IITs/NITs/State Engg. Colleges etc.) by giving full/partial financial support viz. course/registration fee, TA/DA etc.

The Institute has a **Research and Development Cell** which is constituted by a 16 member research committee headed by Dr. A Senthil Kumar, Professor, EEE and Principal as Dean R&D.

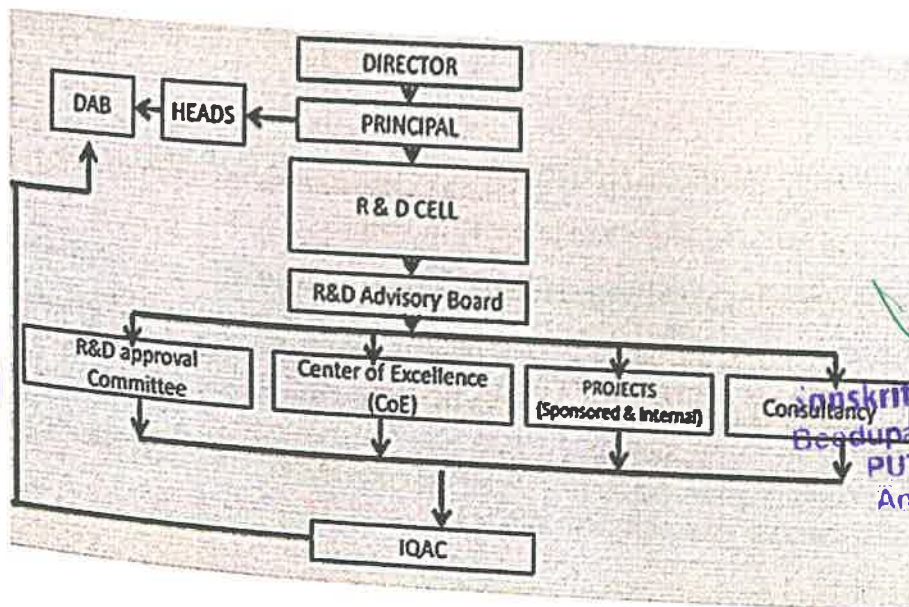
Research and Development Cell comprising of the following members

S.No.	Name	Designation	Role in RDC
1	Dr. A Senthil Kumar	Professor, Dept. of EEE and Principal, SSE	Director, SSE
2	Dr. Balakoteswari M	Dean Academics, SGI and Principal, SSB	Director, SSB
3	Mr. D. Nagaraju	Assistant Professor, ECE	R&D Incharge
4	Mr. M. Mahendra	Assistant Professor, CSE	Member
5	Mr. K V Prasad Reddy	HOD of CSE Dept	Member
6	Mr. S. Hari Krishnan	HOD of ECE Dept	Member



7	Mr N Pavankumar	HOD of EEE Dept	Member
8	Dr.C V Raja Reddy	HOD of MECH Dept	Member
9	Mr.Harish Kumar	HOD of CIVIL Dept	Member
10	Dr.T.Venkatesan	HOD,SSB	Member
11	Ms.Ramya A S	Assistant Professor, CIVIL	Member
12	Mr.O.Bhaskar	Assistant Professor, CSE	Member
13	Ms.Shobha	Assistant Professor, EEE	Member
14	Mrs.N.Pranavi	Assistant Professor, ECE	Member
15	Mrs.Swetha	Assistant Professor, H&S	Member
16	Dr.Srilalitha	Associate Professor, H&S	Member

R&D Hierarchy



A. Jenthi
Principal

Sanskriti School of Engineering
Geedupalli Road, Prasanthnigram
PUTTAPARTHI - 515 134.
Anantapuramu (Dt) A.P.

The Committee will:

- Undertake timely, extensive review of projects from time to time
- Establish policies and guidelines as deemed fit for pursuing research
- Establish the grant application document
- Participate in meetings/teleconferences as called by the Chair/Support Chair;
- Submit feedbacks and updates to the Chair/Support Chair.
- Sanction project proposals for Seed funding

The Chairperson will:

- Chair the meetings and delegate responsibilities;
 - Review the agenda and minutes for each meeting;
 - provide written feedback to funding recommendations submitted by students and Faculty
 - Report to the Board via the R & D cell in charge on the final research priorities to support e.
- the supporting chair will step in to the role of the chair should the chair refuse or unable to full-fill duties effectively and in the same token, the chair may assign another support chair should the support chair be inefficient.

Members of the Committee:

A Senior Professor who will chair the committee co chaired with two professors who are expertise in the research and Development

Functions

- To make the institute as a Research Centre of affiliating University / Other organizations
- To address the issues of research
- To suggest recommendations with their impact
- To provide autonomy to the Principal investigators as per the guidelines provided by the funding authorities
- To encourage /motivate faculty to take research initiatives in the department.
- To provide adequate infrastructure and support in terms of technology and information needs
- Facilitating timely auditing and submission of utilization certificates

To create awareness among the students and faculty on the culture of research and aptitude
To obtain information once in three months in the prescribed format on faculty involvement
of guiding students, paper publications, research projects from external funding agencies and
involving in collaborative research activity



Principal
Sanskriti School of Engineering
Beedupalli Road, Prasanthingram
PUTTAPARTHI - 515 134.
Amantapuram (Dt) A.P.

- To conduct/ participate in workshops, training programs and sensitization programs on capacity building in terms of research and consultancy and imbibing research culture among staff and students
- Arranging guest lecturers under Institute-Industry-Interaction programs to promote research on industry needs
- Modernizing the existing laboratories with additional experimental set ups/ instruments and technology for utilizing the labs for research activity
- To depute senior faculty to various research organizations for getting collaborative projects and adopting best practices
- To provide the facility to the faculty in the form of incentives, sabbatical leaves, academic leaves for improving their qualification and quality of research
- To provide the budget for in-house R & D projects mentioning the guidelines and targets to achieve the expected outcome of the projects proposed
- Sponsoring faculty and students to present papers at National /International conferences as per the stipulated guidelines mentioned in the Quality Document of the institute

Efforts made by the institution in developing scientific temper and research culture and aptitude among students.

The institution has taken the following measures to develop scientific temper and research culture and aptitude among students.

- The College has established a college research committee, incubation centers to promote research and consultancy activity in the campus.
- Guest lectures by eminent researchers, academicians and industrialists are arranged to create awareness and interest among the students and faculty on research.
- It also to provide information about various funding agencies, method of applying for projects etc.
- Seed money towards paper presentations, attending R & D orientation workshops, seminars etc.
- Providing infrastructure facilities, space for department research centers, Procurement of equipment and software.
- Providing e-classrooms with LAN connectivity, LCD projectors, Audio-visual arrangements etc.

Enhancing the existing labs with research oriented equipment and establishing research labs. Hobby workshops to inculcate practical exposure and various clubs at department levels.



A. Jentrol
Principal
Sanskriti School of Engineering
Beedupalli Road, Prasanthingram,
PUTTAPARTHI - 515 134.
Anantapuramu (Dt) A.P.

- The students are guided and encouraged to present papers in the seminars and conferences.
- The students are guided and encouraged in applying research projects for CSI, IETE and other agencies.
- To inculcate scientific temper, research culture and aptitude among students in all the departments are encouraged to take up in-house multidisciplinary projects among various courses.
- The faculty and students are encouraged to visit research oriented labs, industries such as DRDO, BHEL, BDL. Students are permitted to do their major projects in Govt., recognized research laboratories.
- Students are taken to Production industries and research labs like DRDO, RCI, BDL, BHEL and many more institutions to interact with industrial experts regularly.




Principal
Sanskriti School of Engineering
Beedupalli Road, Prasanthingram,
PUTTAPARTHI - 515 134.
Anantapuramu (Dt) A.P.

LIST OF FUNDING AGENCIES

1. Ministry of Environment & Forests:
2. Department of Science and Technology (DST)
3. Department of Atomic Energy (DAE)
4. Department of Biotechnology (DBT)
5. Department of Electronics (DOE)
6. Department of Food Processing Industries
7. Ministry of New and Renewable Energy
8. Department for Scientific & Industrial Research
9. Indian Council of Agricultural Research (ICAR)
10. Indian Council of Medical Research (ICMR)
11. University Grants Commission (UGC)
12. Council of Scientific and Industrial Research (CSIR)
13. Defence Research and Development Organisation (DRDO)
14. Indian National Science Academy (INSA)
15. Indian Council of Social Science Research (ICSSR),
16. Department of Mines
17. Ministry of Coal
18. Forests Research Institute
19. Department of Education (DOEd)
20. Department of Non-Conventional Energy Sources (DNES)
21. National Information System for Sci. & Technology (NISSAT)
22. Technology Absorption and Adaptation Scheme(TAAS).
23. Department of Space (DOS).
24. Science and Engineering Research Council (SERC)
25. Intensification of Research in High Priority Areas(IRHPA).
26. Science and Society Related Programmes
27. Science and Technology Application for Rural Development (STARD)
28. Science and Society Related Programmes
29. Science & Technology for Weaker Sections (STAWS).
30. Science and Society Related Programmes



Principal
Principal
Sanskriti School of Engineering
Beedupalli Road, Prasanthingram,
PUTTAPARTHI - 515 134.
Anantapuramu (Dt) A.P.

31. Scheme for Young Scientific professionals
32. Science and Society Related Programmes(STARD)
33. WCP (Women Component Plan) Science and Society Related Programmes
34. Utilisation of Scientific Expertise of Retired Scientists
35. Science and Society Related Programmes
36. Science & Technology Communication & Popularisation Programme
37. Natural Resources Data Management System (NRDMS)
38. Instrument Development Programme (IDP)
39. AICTE
40. Indian Council of Agricultural Research (ICAR)
41. Defence Research and Development Organisation(DRDO)



A. Venkatesh
Principal
Sanskriti School of Engineering,
Beedupalli Road, Prasanthingram,
PUTTAPARTHI - 515 134.
Anantapuramu (Dt) A.P.



Sanskriti School of Engineering

(Affiliated to JNTUA, Ananthapur & Approved by AICTE, New Delhi)

Puttaparthi-515 134.

Cluster	Name of the faculty	Area of Interest
Mathematics	Mr.M.N. Manian Mr. R.Raghavendra	Differential equations Applied Mathematics
Physics	Dr.K.Sreelalitha Dr.S.Parveen	Thin Films Condensed matter Physics Nano materials
Chemistry	Dr.B.Samba Siva Mrs. M.Swetha	Supra molecular Chemistry Metal Chemistry Herbal Chemistry Analytical Chemistry




Principal
Sanskriti School of Engineering
Beedupalli Road, Prasanthingram.
PUTTAPARTHI - 515 134.
Anantapuramu (Dt) A.P.



SANSKRITHI SCHOOL OF ENGINEERING, PUTTAPARTHI

28.03.2021

Circular

Circular No: SSE/R&D/

The following faculty are nominated as Research and Development committee members and there will be a meeting on 29.03.2021 at 11.00AM in the Shanthi room.

Agenda

1. Cluster Formation
2. Research proposals
3. Action Plan
4. Any other item

Committee Members

Name	Designation
Mr.B. Vijay Reddy	Chairman, SGI
Dr. A Senthil Kumar	Principal, SSE
Mr.D.Nagaraju	R&D Incharge,SSE
Mr.M.Mahendra	Assistant Professor, CSE
Mr. K V Prasad Reddy	HOD of CSE Dept
Mr.S.Hari Krishnan	HOD of ECE Dept
Mr N Pavankumar	HOD of EEE Dept
Dr.C V Raja Reddy	HOD of MECH Dept
Mr.Harish Kumar	HOD of CIVIL Dept
Mr. N.S.Manian	HOD of H&S Dept
Ms.G.PSmitha	Assistant Professor, CIVIL
Ms.P.Meghana	Assistant Professor, CSE
Ms.Shobha	Assistant Professor, EEE
Mrs.N.Pranavi	Assistant Professor, ECE
Mrs.Swetha	Assistant Professor, H&S
Dr.Srilalitha	Associate Professor, H&S


R&D in charge




Principal
Sanskriti School of Engineering
Beedupalli Road, Prasanthingram,
PUTTAPARTHI - 515 134.
Anantapuramu (Dt) A.P.



Sanskriti School of Engineering

(Affiliated to JNTUA, Ananthapur & Approved by AICTE, New Delhi)

Puttaparthi-515 134

R & D Action Plan – July 2021- Jan 2022

Research Coordinator: Dr. K. Sreelalitha, Associate Professor, Physics

Ms. M. Swetha, Assistant Professor, Chemistry

S.No	Name of the Activity	Description	Number of Activities Planned	Remarks
1	Publications Journal/ Book Chapters	Indexed in scopus/ UGC care Journals	One per faculty	Expecting 5 numbers per total in semester
		Indexed in SCI	2	2 per year
2	Events Participating	FDP/ Conferences/Webinar / Workshops	One per faculty	Expecting 5 numbers per total in semester ³
3	Event Organizing	Webinar/Seminar	2	Total 2 numbers per semester
4	MOU/ Consultancy Services	Industry Partnership	To make effective consultancy plan Try to contact one Physical/Chemical Laboratories	Continuous Progress



(Signature)
Principal

Sanskriti School of Engineering
Beedupalli Road, Prasanthingram,
PUTTAPARTHI - 515 134.
Anantapuramu (Dt) A.P.